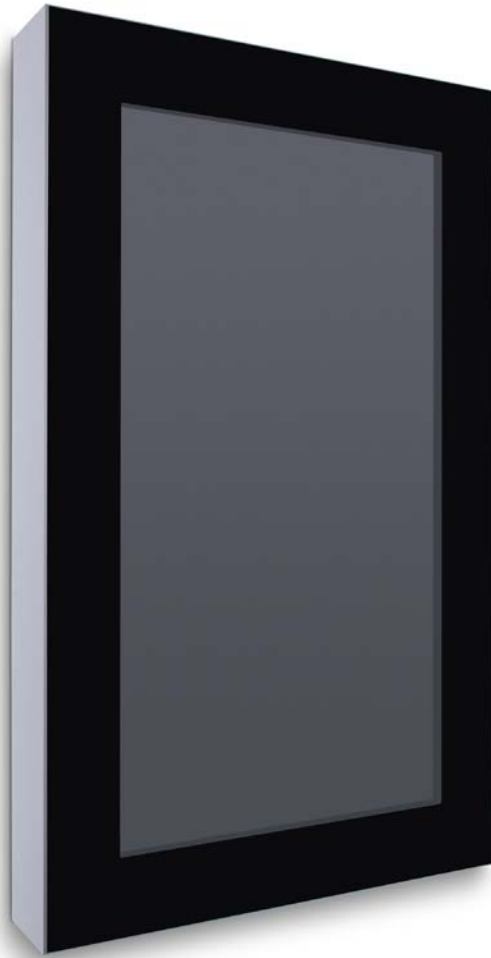


Wall Panel

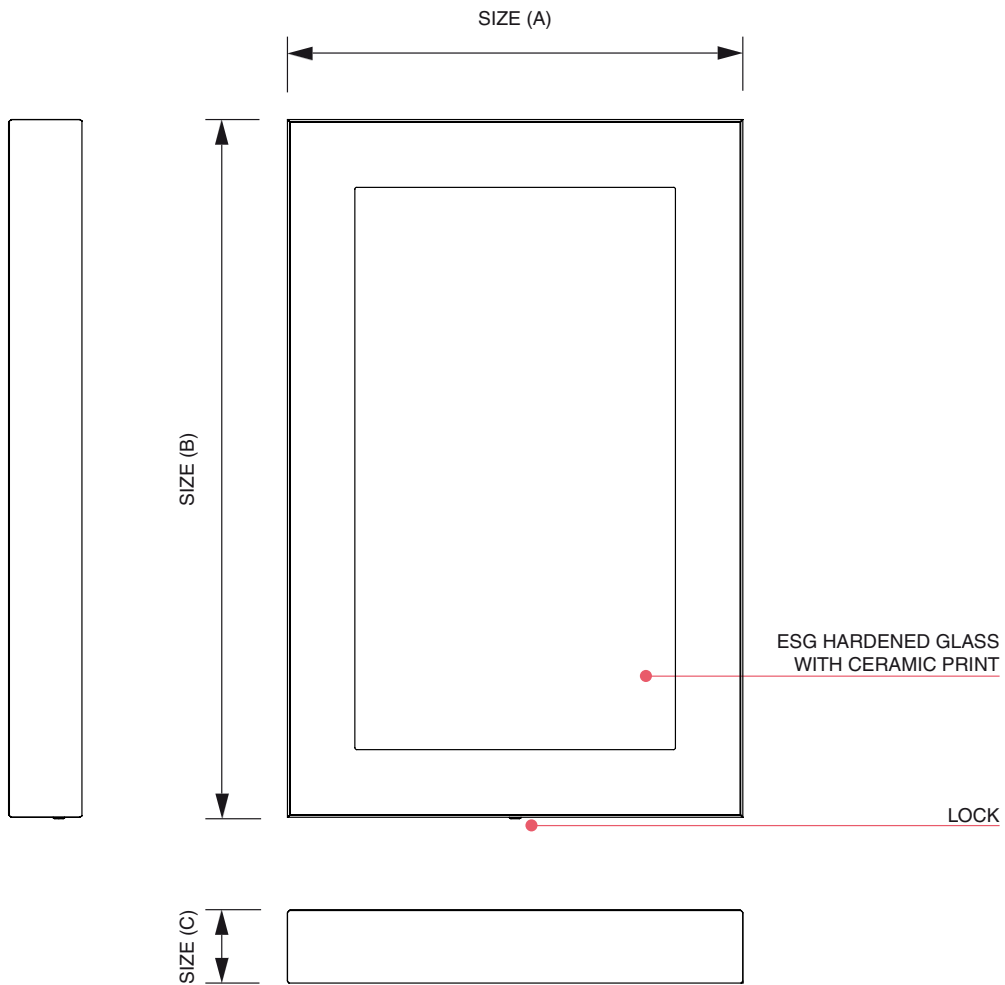


Wall Panel

Information panel in restaurants, hotels, public and commercial environments • Front of the Wall Panel is made of high tempered safety glass to protect your screen from vandalism • Wall Panel can be installed in both vertical and horizontal orientation • Secure with lock • Cooling the the devise is provided without the use of fans, i.e. it is silent. Wall Panel can be installed in environments with ambient temperatures ranging from 5 - 40 °C • Simple to Instal - attach support frame to the wall, fit the screen to the holder using the VESA mount, place the holder onto the frame and lift on the front cover • Standard screen size 32" to 49"

PRODUCT SHEET

Wall Panel



PRODUCT SHEET

Wall Panel

ARTICLE CODE	EAN / GTIN	SCREEN SIZE	MAX. SCREEN DEPTH	SIZE (A x B x C)	NET WEIGHT
DSIBWALL22F	-	22"	90 mm	370 x 588 x 72 mm	20,0 kg
DSIBWALL32F	-	32"	90 mm	612 x 918 x 72 mm	25,0 kg
DSIBWALL43F	-	43"	90 mm	700 x 1110 x 72 mm	30,0 kg
DSIBWALL46F	-	46"	90 mm	785 x 1232 x 122 mm	33,5 kg
DSIBWALL49F	-	49"	90 mm	777 x 1247 x 122 mm	35,0 kg

ARTICLE CODE	PACKING SIZE	PACKING WEIGHT	PCS / PALLET	WEIGHT OF PALLET	SHIPPING
DSIBWALL22F	581 x 764 x 140 mm	0 kg	20	0 kg	individual
DSIBWALL32F	700 x 1000 x 130 mm	0 kg	10	0 kg	individual
DSIBWALL43F	900 x 1250 x 140 mm	0 kg	5	0 kg	individual
DSIBWALL46F	910 x 1260 x 160 mm	0 kg	5	0 kg	individual
DSIBWALL49F	910 x 1260 x 160 mm	0 kg	5	0 kg	individual

PRODUCT SHEET

Wall Panel

Assembly Instructions



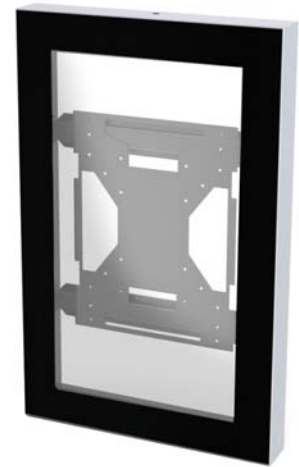
STEP 1

Mount the frame on the wall.



STEP 2

Mount screen holder to the back of the screen and then insert holder with the screen attached into the frame on the wall.



STEP 3

Place the cover on the upper part of the frame, tighten to the bottom of the frame and lock.

BEWARE while opening the wall panel with the touch foil!

1. Unlock the wall panel cover.
2. Take off/deflect/divert the wall panel cover from the wall at its bottom side but only partly and carefully.
3. Disconnect the cable between touch control unit at the cover and the player in the frame on the wall.
4. Take down the wall panel cover.